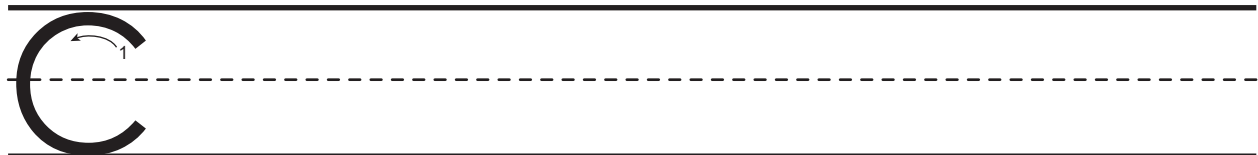
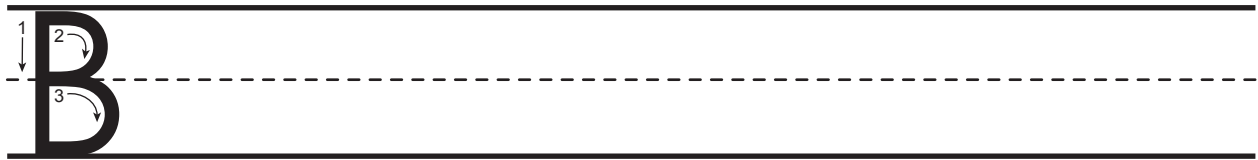
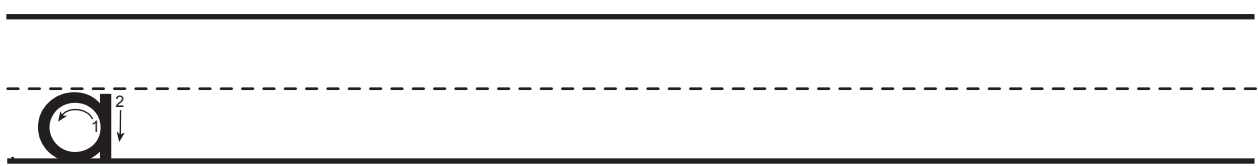
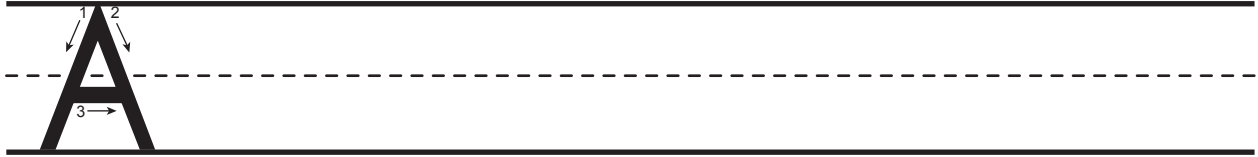


Preschool Express Kindergarten Readiness Workbook

Penmanship Practice Pages (Aa, Bb, Cc)

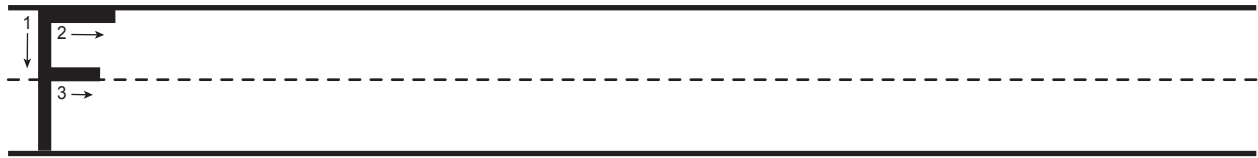
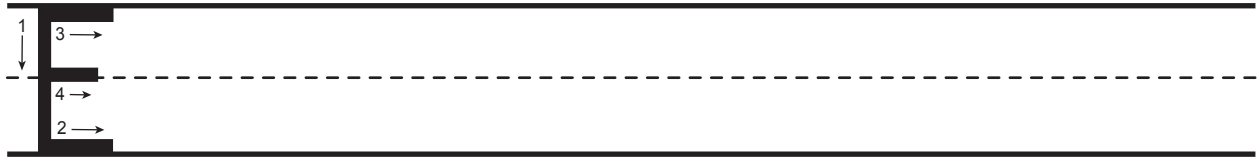
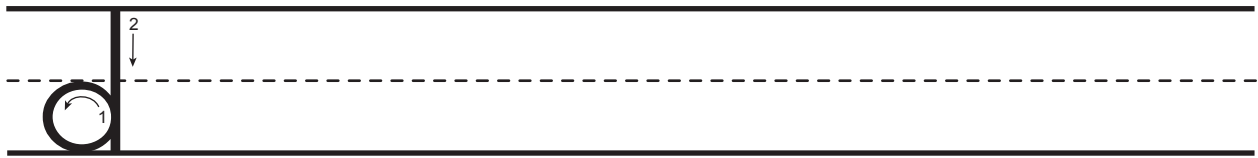
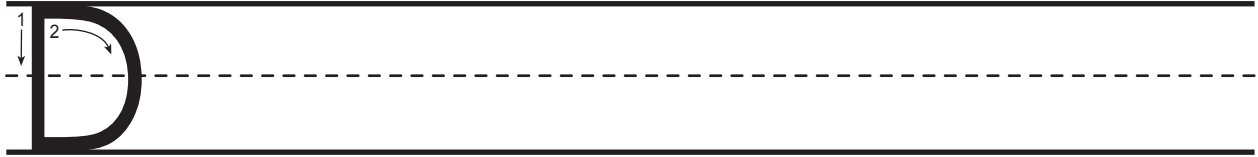
Trace each example. Then practice writing your own next to it.



Preschool Express Kindergarten Readiness Workbook

Penmanship Practice Pages (Dd, Ee, Ff)

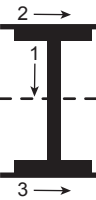
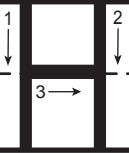
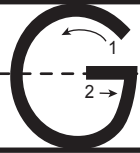
Trace each example. Then practice writing your own next to it.



Preschool Express Kindergarten Readiness Workbook

Penmanship Practice Pages (Gg, Hh, Ii)

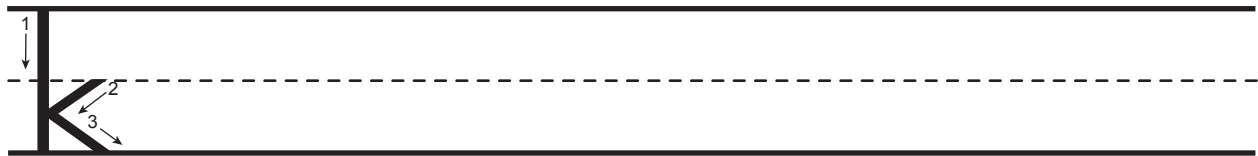
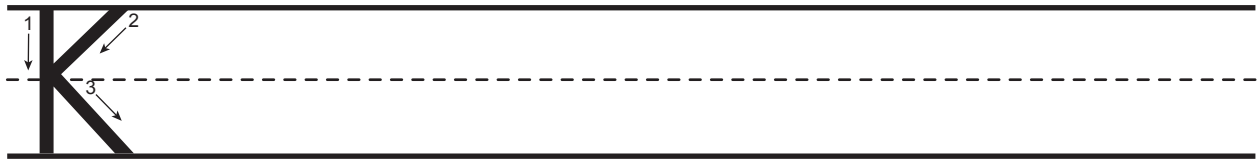
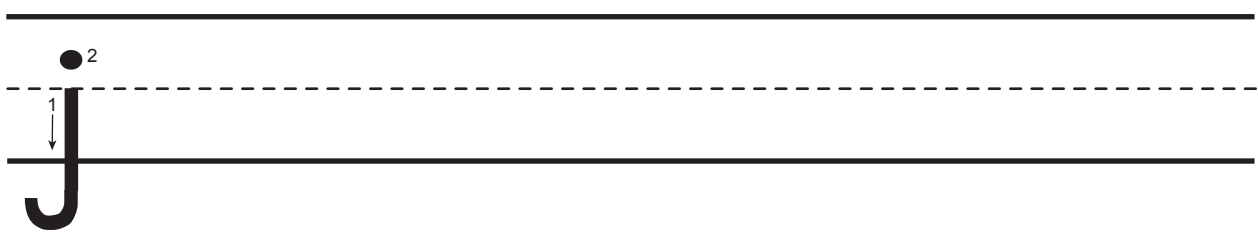
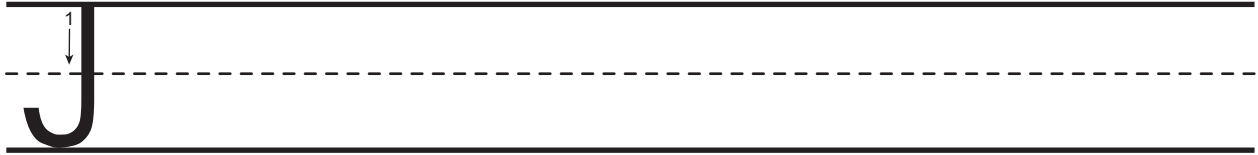
Trace each example. Then practice writing your own next to it.



Preschool Express Kindergarten Readiness Workbook

Penmanship Practice Pages (Jj, Kk, Ll)

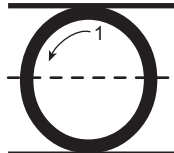
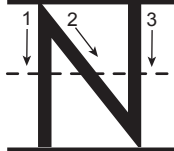
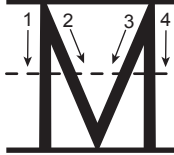
Trace each example. Then practice writing your own next to it.



Preschool Express Kindergarten Readiness Workbook

Penmanship Practice Pages (Mm, Nn, Oo)

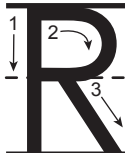
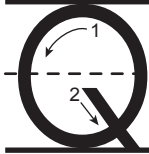
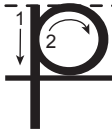
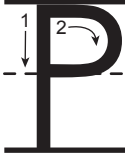
Trace each example. Then practice writing your own next to it.



Preschool Express Kindergarten Readiness Workbook

Penmanship Practice Pages (Pp, Qq, Rr)

Trace each example. Then practice writing your own next to it.



Preschool Express Kindergarten Readiness Workbook

Penmanship Practice Pages (Ss, Tt, Uu)

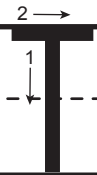
Trace each example. Then practice writing your own next to it.



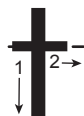
A large uppercase letter 'S' is shown on a set of three horizontal lines (top, middle dashed, bottom). The letter is positioned between the top and middle lines. A curved arrow labeled '1' starts at the top and follows the path of the letter. A second arrow labeled '2' starts at the top of the curve and follows the path of the letter.



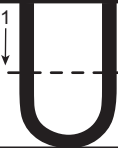
A small lowercase letter 's' is shown on a set of three horizontal lines. The letter is positioned between the middle dashed and bottom lines. A curved arrow labeled '1' starts at the top and follows the path of the letter. A second arrow labeled '2' starts at the top of the curve and follows the path of the letter.



A large uppercase letter 'T' is shown on a set of three horizontal lines. The letter is positioned between the top and middle lines. A vertical arrow labeled '1' points downwards from the top line to the middle dashed line. A horizontal arrow labeled '2' points to the right from the top line to the right edge of the letter.



A small lowercase letter 't' is shown on a set of three horizontal lines. The letter is positioned between the middle dashed and bottom lines. A vertical arrow labeled '1' points downwards from the middle dashed line to the bottom line. A horizontal arrow labeled '2' points to the right from the middle dashed line to the right edge of the letter.



A large uppercase letter 'U' is shown on a set of three horizontal lines. The letter is positioned between the top and middle lines. A vertical arrow labeled '1' points downwards from the top line to the middle dashed line. A second arrow labeled '2' starts at the bottom of the vertical stroke and curves to the right and then back down to the bottom line.

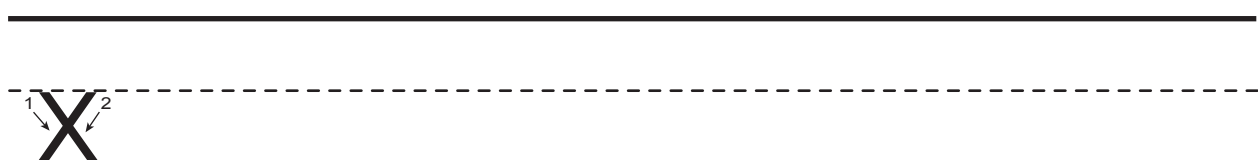
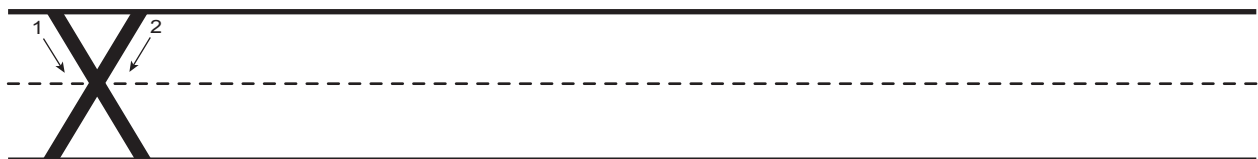
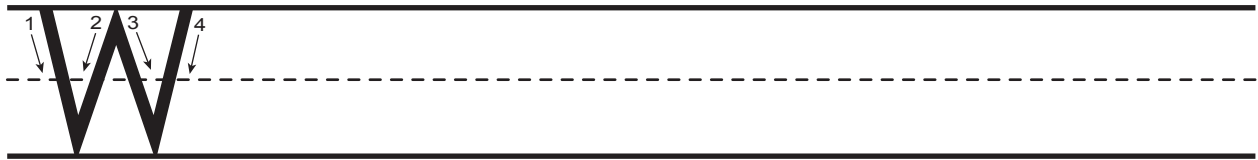
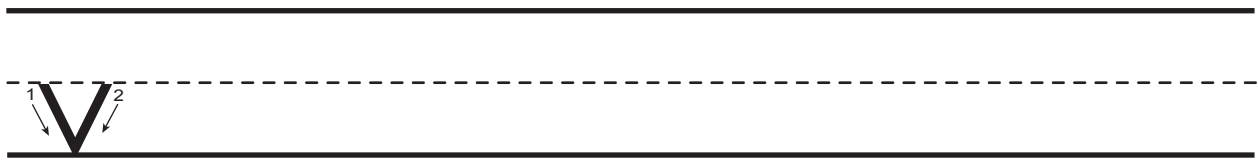
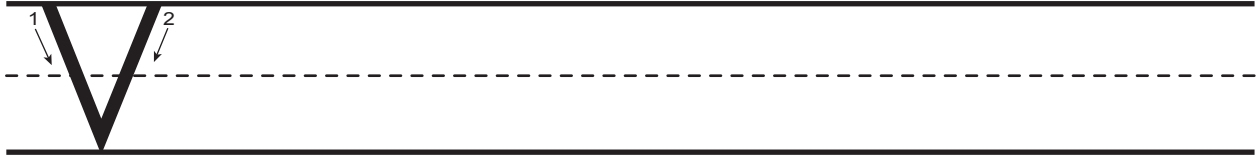


A small lowercase letter 'u' is shown on a set of three horizontal lines. The letter is positioned between the middle dashed and bottom lines. A vertical arrow labeled '1' points downwards from the middle dashed line to the bottom line. A second arrow labeled '2' starts at the bottom of the vertical stroke and curves to the right and then back down to the bottom line.

Preschool Express Kindergarten Readiness Workbook

Penmanship Practice Pages (Vv, Ww, Xx)

Trace each example. Then practice writing your own next to it.



Preschool Express Kindergarten Readiness Workbook

Penmanship Practice Pages (Yy, Zz)

Trace each example. Then practice writing your own next to it.

